

# SILVA

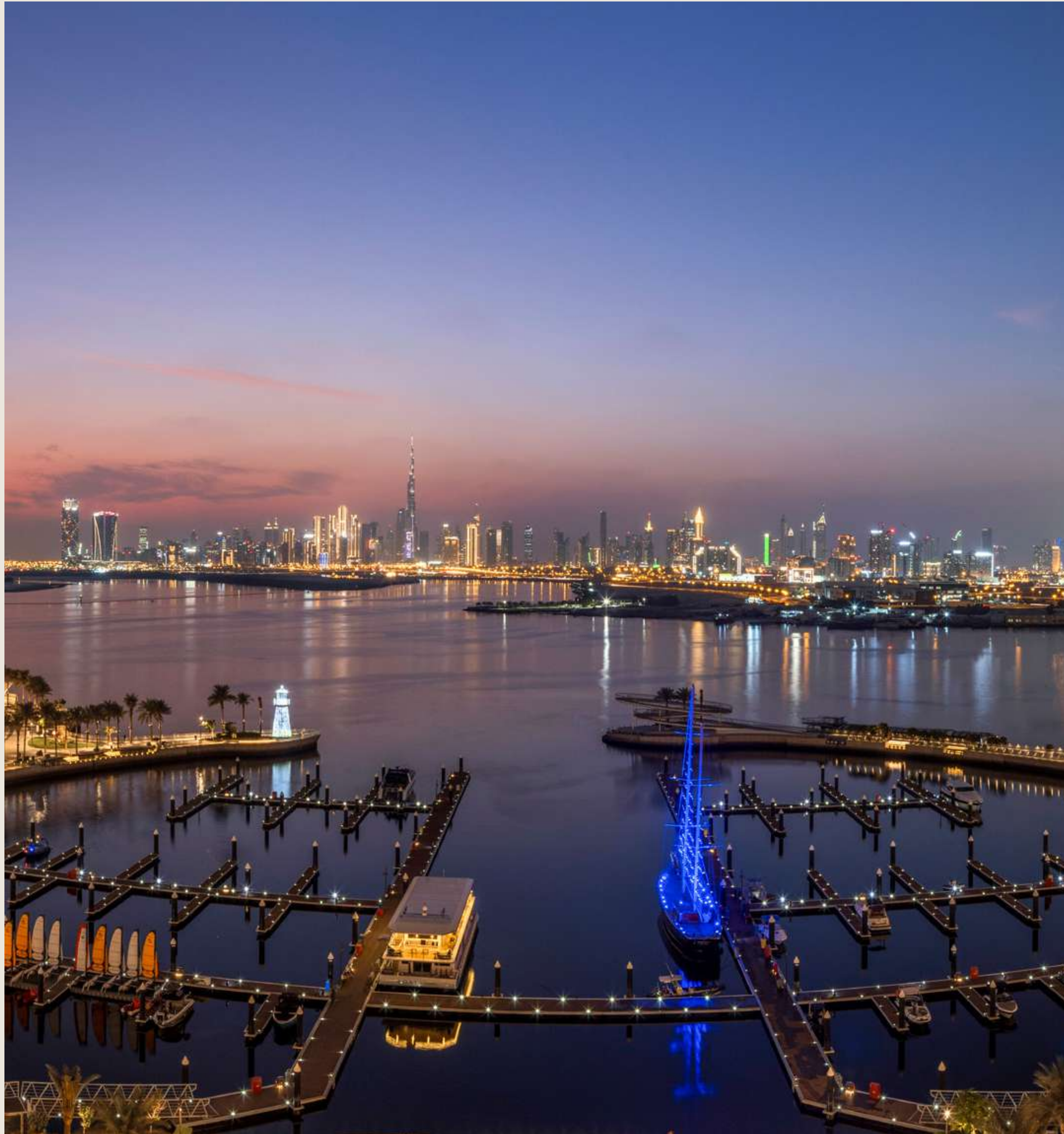
DUBAI CREEK HARBOUR

EMAAR



# Views to Live for

DUBAI CREEK HARBOUR



THE DESTINATION

# The Future of Waterfront Living

Dubai Creek Harbour is a unique waterfront enclave where contemporary luxury, serene nature and innovation come together. Its striking architectural marvels are enhanced by its proximity to the Ras Al Khor Wildlife Reserve, renowned for its rich biodiversity, including flamingos. The hub offers a dynamic blend of culture, commerce, and tranquillity—shaping the future of urban living.



# Your Gateway to the City

10 mins  
Downtown Dubai

15 mins  
Dubai International Airport

40 mins  
Al Maktoum International Airport

## DUBAI METRO LINES

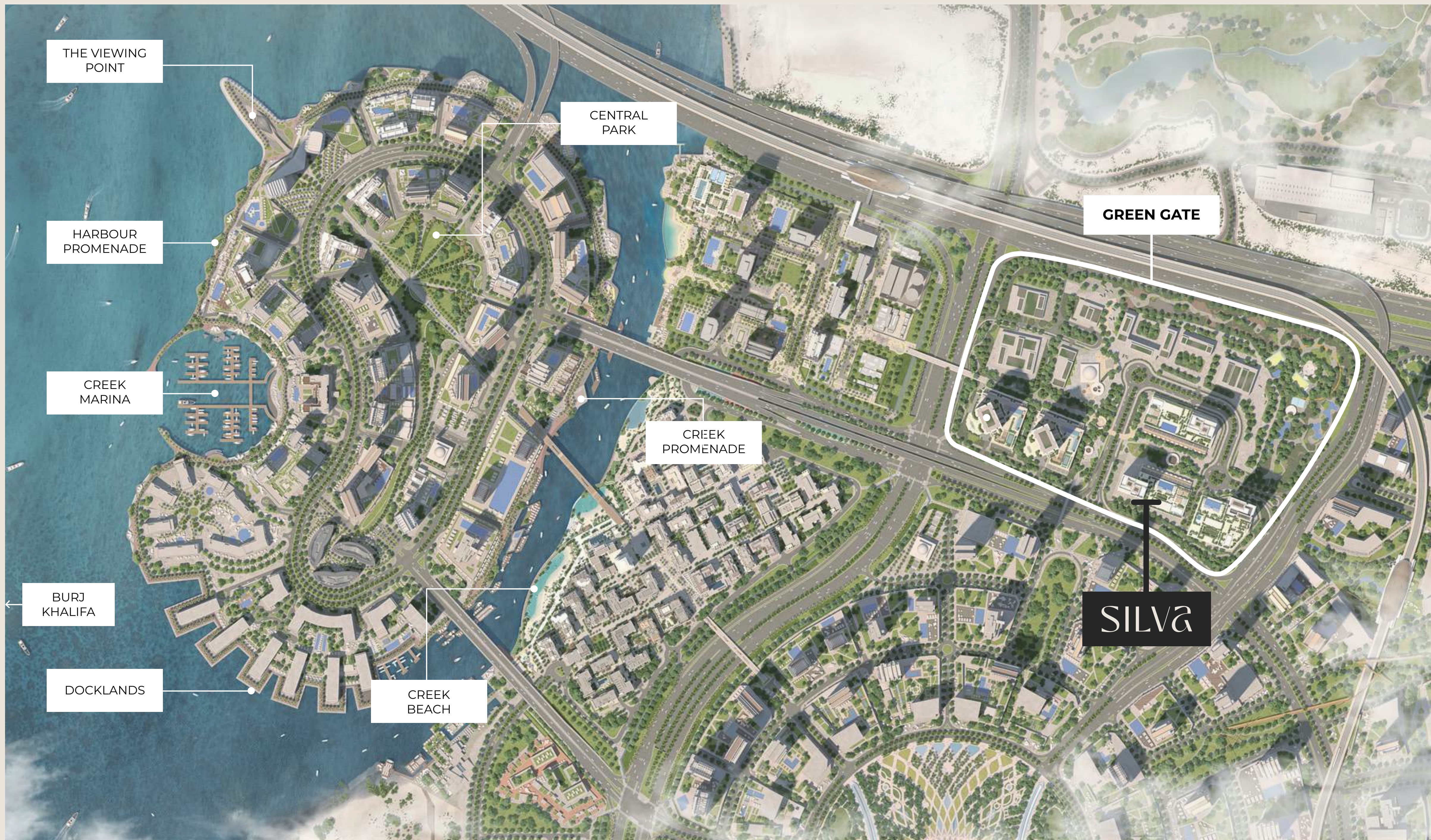
- RED LINE
- GREEN LINE
- FUTURE BLUE LINE

PRESENTING  
**SILVA**

DUBAI CREEK HARBOUR

EMAAR





THE VIEWING POINT

HARBOUR PROMENADE

CREEK MARINA

CENTRAL PARK

GREEN GATE

CREEK PROMENADE

BURJ KHALIFA

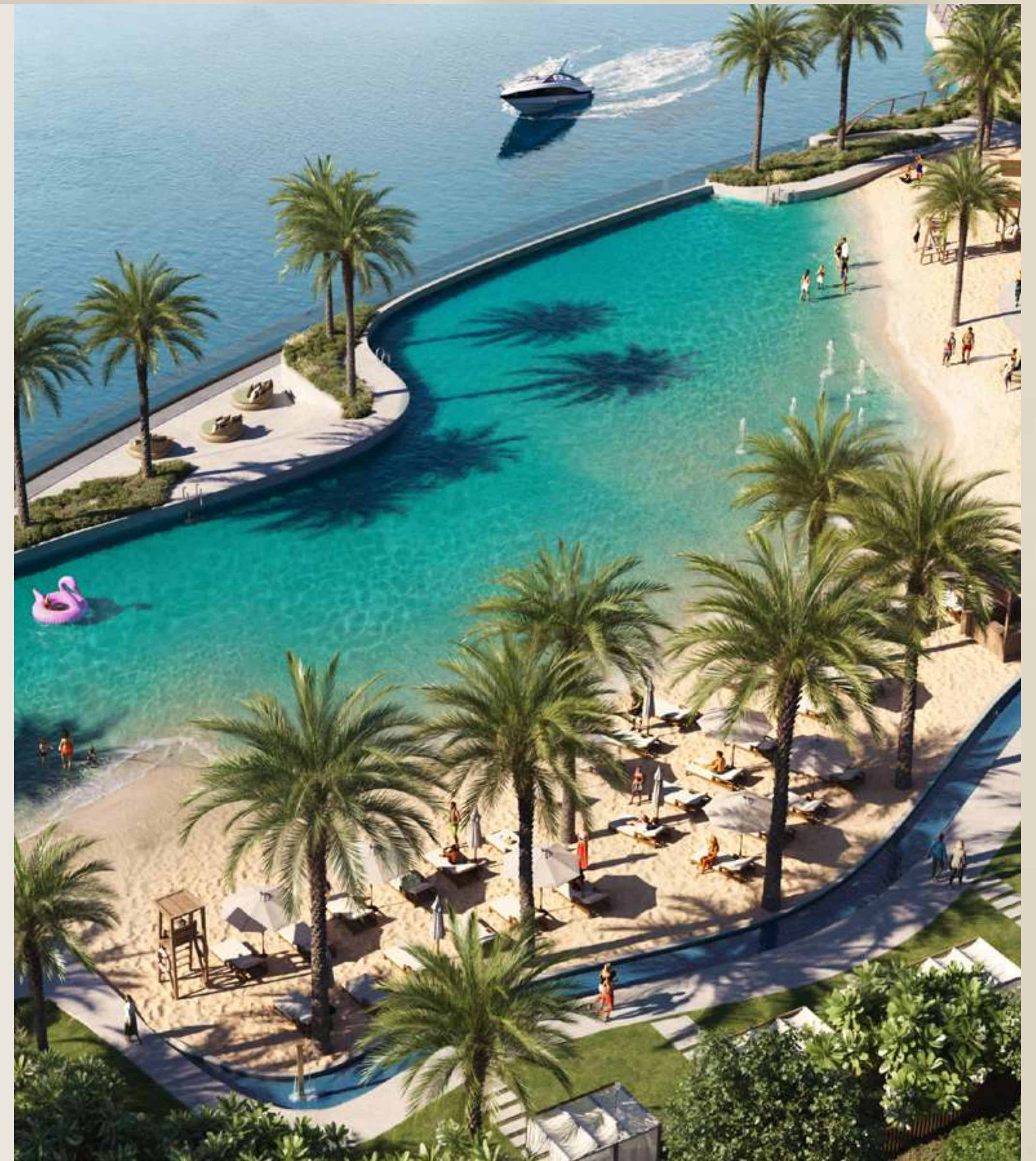
DOCKLANDS

CREEK BEACH

SILVA

NEARBY ATTRACTIONS

## Creek Promenade



## Creek Beach



THE VIEWS

## Panoramic Perfection

Striking architecture, harmonized with ambient artistry, culminates in a landmark of distinction. Private balconies and panoramic terraces become exclusive vantage points, highlighting quintessential vistas as bespoke experiences. Here, design elevates beyond the functional, inviting residents to immerse themselves in a life of inspired elegance.



## Poised Living, Framed by Nature

Discover Silva, a canvas painted with nature's finest hues and the city's vibrant strokes. Here, the cadence of Creek views, skyline view and jade landscapes create an inspiring backdrop for a life of poised living. From green living, calm waterside paths to dynamic retail havens, experience a curated blend of peace and vitality.



# Embrace Soulful Living

Life flourishes in this haven where nature fuels the soul and holistic well-being orchestrates each day. Secluded yoga hubs foster inner calm, while running tracks inspire fluid movement. The multi-sports court becomes a stage for camaraderie and healthy pursuits, and shimmering swimming pools offer a tranquil escape beneath the sun's golden caress.



THE COMMUNITY

# Green Gate

A Calm Escape



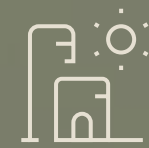
THE AMENITIES

# Live in Harmony with Nature

Welcome to Greengate, a hidden gem featuring sprawling gardens and verdant landscapes. This peaceful hub offers the perfect balance—an escape from the city's hustle, yet steps away from world-class shopping, dining, and cultural experiences. It's a place where urban life slows down, inviting you to breathe and recharge.



Green Gate  
Park



Central  
Plaza



Landscaped  
Links



Multi-Sport  
Courts



Lawn &  
BBQ Areas



Football  
Field



Running  
Track



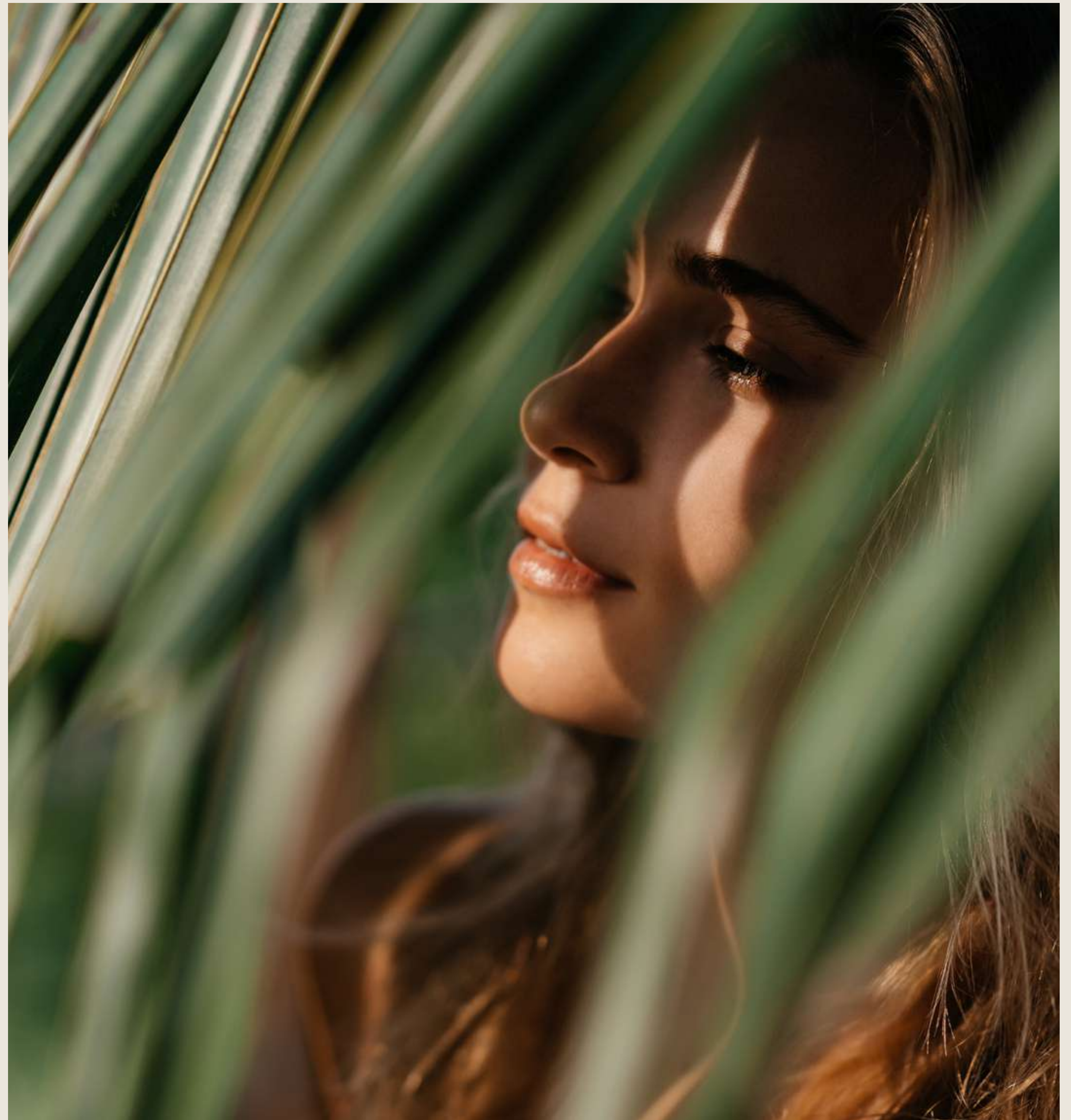
Skate  
Park



Retail/  
F&B



Climbing  
Wall



THE PARK

Energize. Unwind.  
Connect.







WALL CLIMBING

LUSH GREEN LAWNS

# Your Playground of Possibilities



FITNESS ZONES

# Where the Community Comes to Move





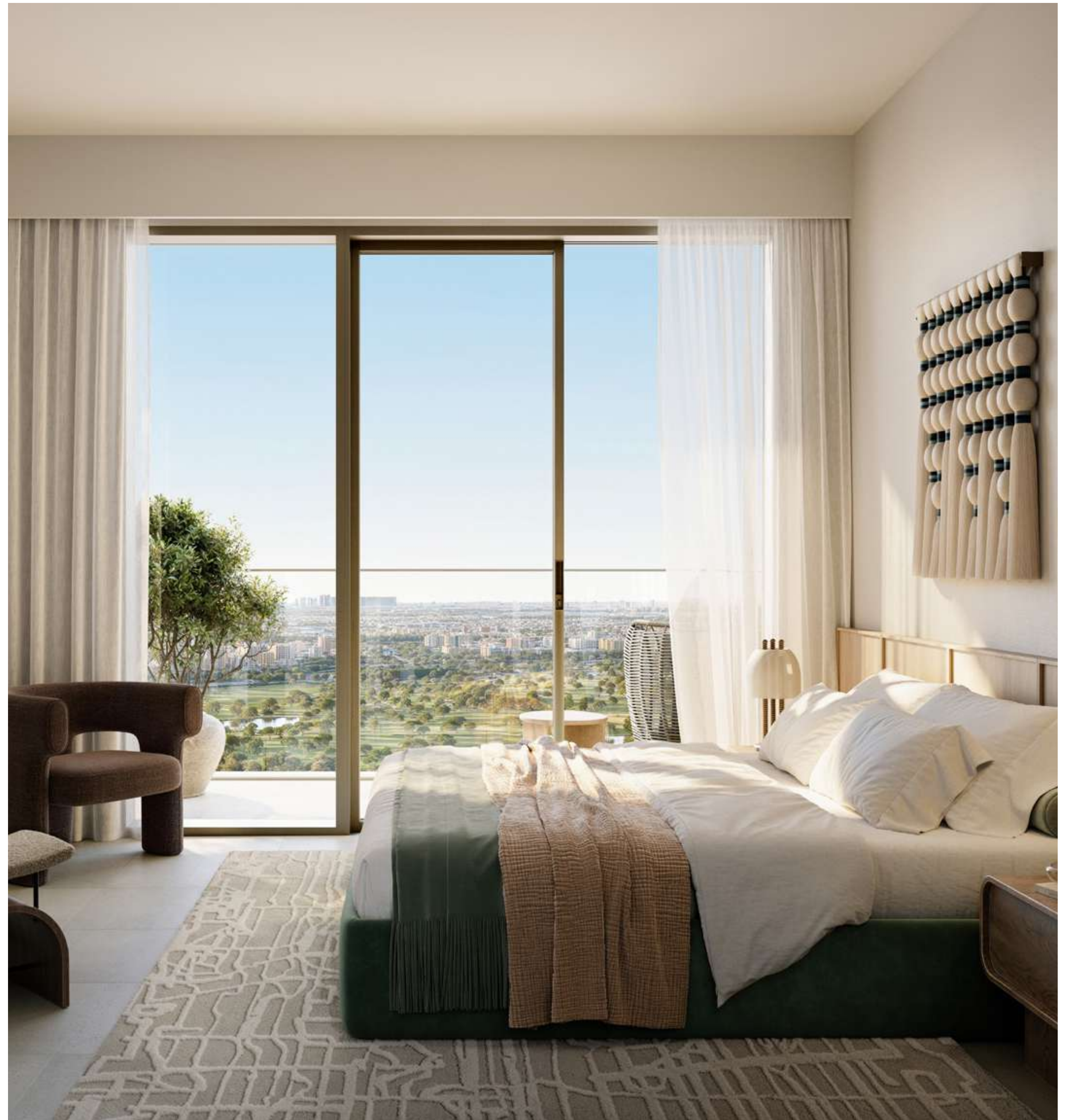
SOCIAL HUB



GREEN ZEN SPACES

# Elevating Interior Opulence

Step within a home where expansive living areas are bathed in an exquisite palette of earthy tones and flow seamlessly from grand lobbies, establishing an ambience of understated opulence.







# Convenient Connectivity

The upcoming new Blue Line Metro will place Dubai Creek Harbour at the nexus of culture, leisure, and city life. From spontaneous Downtown dinners to breezy beach days, it sets out to bring the best of Dubai within easy reach. This is more than a home; it's your front-row seat to the future of connected urban living, right here in the heart of it all.



Image Courtesy:  
Dubai Media Office



EMAAR

# Global Lifestyle Developer

A leader in the global real estate market, EMAAR has grown over the years to become the largest real estate developer out-side of China. You will be investing with one of the best-regarded brands in the world.

Market Cap AED

114 Bn

Revenue AED

35.5 Bn

Net Profit AED

17.5 Bn

Presence in

12+

Global Markets

Delivered

118,400+

Residential Units

Under Development

50,500+

Residential Units

\*As on FY 2024